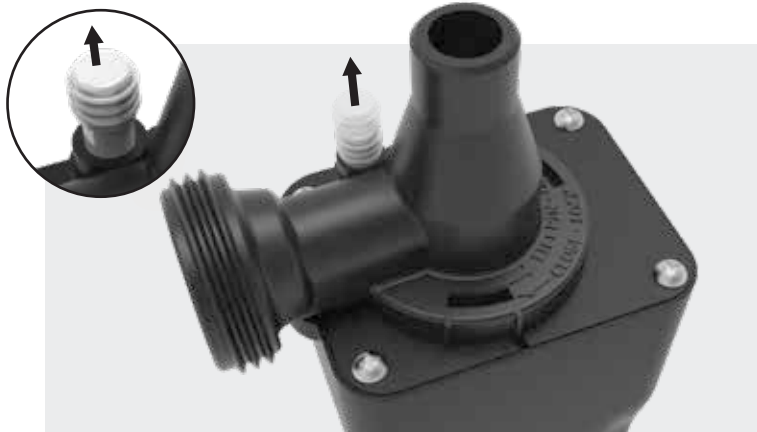
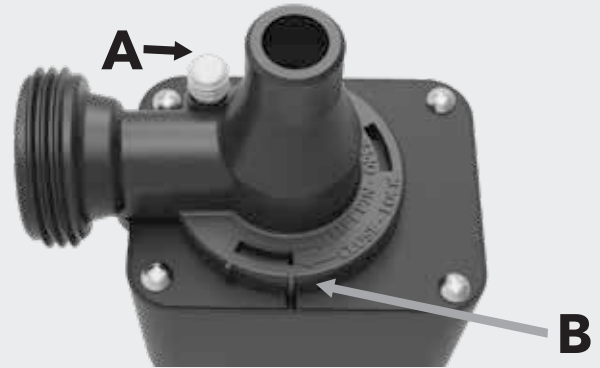


DEVICE MAINTENANCE CLEANING INSTRUCTIONS

- Ensure server is empty prior to removing spigot.
- Do not disassemble spigot while it is attached to server.
- Do not submerge or pour water over electrical housing.

EXAMINE THE UNDERSIDE OF THE SPIGOT
Note the location of (A) spring loaded pull pin and (B) alignment marks.



STEP 1: LIFT PIN. WHILE PIN IS HELD UP YOU WILL BE ABLE TO ROTATE SPIGOT BODY



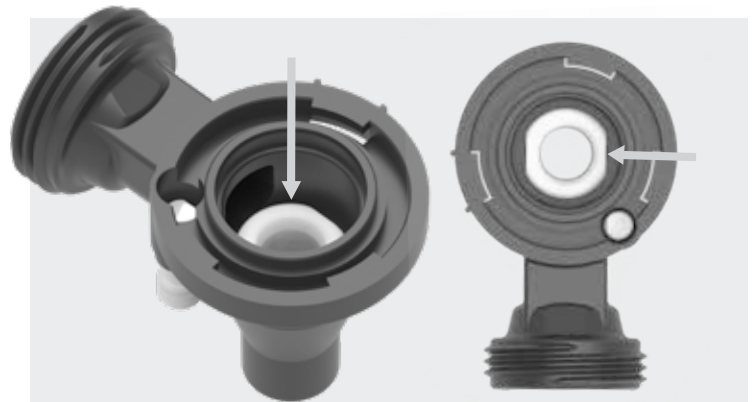
STEP 2: ROTATE SPIGOT BODY COUNTER CLOCKWISE TO REMOVE SPIGOT BODY



STEP 3: REMOVE SPIGOT BODY

(Spring pin returns to normal position)

- Spigot seal assembly is removable. Do not remove spring from stainless steel core.
- Silicone seal can be rinsed clean or replaced if necessary.



NOTE: CARE MUST BE TAKEN TO NOT DAMAGE SPIGOT SEAT
(Use a soft, non-abrasive cloth to clean)

PREPARATION TIPS:

Prepare a fresh bleach solution each day in a well-ventilated area that is separate from children.

Label bottles of bleach solution with contents, ratio and date mixed.

Use cool water. Always add bleach to cool water, NOT water to bleach.

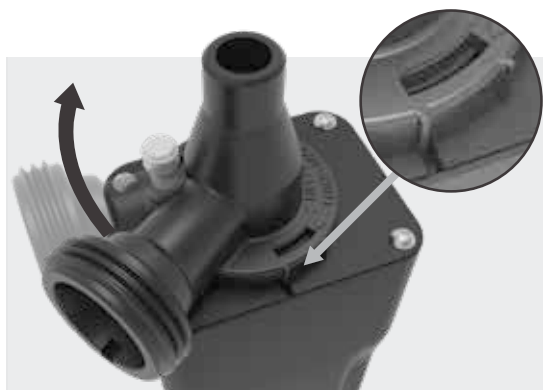
Wear gloves and eye protection.

Prepare solution in an area with an eye wash.



STEP 4: CLEAN COMPONENTS (EXCLUDING ELECTRICAL HOUSING)

- Clean the surface with soap and water before disinfecting or sanitizing.
- Rinse with clean water & dry with paper towel.
- Apply chlorine bleach and water solution to the entire area to be disinfected or sanitized.
- Air dry for at least 2 hours.



STEP 7: PLACE SPIGOT BODY ONTO ELECTRICAL HOUSING, AS SHOWN (spring pin will rise 4mm)

- Once the spigot body is aligned in the correct position, rotate clockwise and the pin will spring back to its original position.

SANITIZING SOLUTIONS			
WATER	BLEACH STRENGTH*		
	2.75%	5.25-6.25%	8.25%
1 Gallon	1 Tablespoon	2 Teaspoons	1 Teaspoon
1 Quart	1 Teaspoon	1/2 Teaspoon	1/4 Teaspoon

*Use only plain unscented bleach that lists the percent (%) strength on the manufacturer's label. Read the label on the bleach bottle to determine the bleach strength.



STEP 5: WIPE DOWN ELECTRICAL HOUSING WITH A WARM, DAMP CLOTH



STEP 6: PLACE SEAL SPRING ASSEMBLY INTO ELECTRICAL HOUSING



STEP 8: BEFORE FILLING

- The spigot should be operated at least once to reset the seal before filling server with liquid. This should be done using normal sensor activation or the manual button after reassembly.



SCAN QR CODE to learn more or to order replacement parts

- Remember to inspect/clean regularly to ensure optimal performance.